

In this Issue...

Access to EDINA services: from Athens to the UK federation	1
Marine Digimap launched	2
GeoCrossWalk crosses over to Digimap	2
Metadata made easy with Go-Geo!	2
Digimap: OS MasterMap to replace Land-Line.Plus .	2
Land, Life & Leisure enhancements and costs for 08/09	3
News in Brief.....	3
Yet more on Access Management	4
New look and features on EDINA website	4
Forthcoming Events	4

About EDINA

EDINA is a JISC-funded national datacentre based at the University of Edinburgh. It offers a library of data, information and research resources. All EDINA services are free of charge at the point of use. For information on institutional subscription fees, visit the EDINA web site, or contact us (details below).

Contacts

Tel: 0131 650 3302
Fax: 0131 650 3308
Email: edina@ed.ac.uk
Web: <http://edina.ac.uk>

Suggestions and comments may be sent to edina@ed.ac.uk

Access to EDINA services: from Athens to the UK federation

by Peter Burnhill, Director of EDINA

The world of identity management affects us all. At EDINA we are busy making sure that all of our JISC services are accessible via the UK federation as we approach 1 August 2008. It is important that all parties take steps to ensure that there is continuity of access for users – researchers, students, teachers and support staff in UK universities, colleges and the like.

To risk over-simplifying: users from institutions that have a Shibboleth identity provider or that use the Athens-to-Shibboleth gateway should be able to access EDINA services, but those from institutions which cannot (or choose not to) assert user accountability will not be able to access services such as Digimap. The situation is fluid – please check both the EDINA and UK federation websites for updates: <http://edina.ac.uk> & <http://www.ukfederation.org.uk/>

JISC policy

As many of you will know, there is now a new national infrastructure, sponsored by JISC and Becta, known as the “UK Access Management Federation for Education and Research” (the UK federation). The JISC middleware team and those engaged in making the UK federation a reality have been hard at work recruiting educational institutions to federation membership, as well as providers of online services to UK education and research.

JISC has determined that the UK federation is to be the principal means of authentication and authorisation for the services that they support. As a JISC national data centre, EDINA is following this policy. The JISC contract with Eduserv for the provision of the Athens service to all JISC organisations ceases on 31 July. At that point the arrangements by which Eduserv makes the Athens Service Provider software available to JISC services will lapse. JISC have written to say that “JISC service providers should not have any reason to continue to operate Athens interfaces beyond that time”.

Plans and progress

Accordingly, EDINA is planning that its services will accept user credentials only from institutions (‘identity providers’ in this context) within the UK federation.

The majority of services are already available via the UK federation: Digimap is now also included. (See back page for details.) We expect Jorum,

agencensus, and the Depot to be accessible via the federation by 1 August. There are separate arrangements for UKBORDERS as determined by the Census Registration Service, run by the UK Data Archive.

User Accountability

A key point for institutions to note is that some services need an additional level of assurance, as required by the licences granted by data rights holders. Known as ‘user accountability’, this is where the identity of a given end-user could, in extreme circumstances (usually following suspected wrongdoing), be ascertained by an identity provider and disclosed to a service provider.

The UK federation supports this additional level of assurance through declaration by identity providers. It will be necessary for an identity provider, typically an institution (or their out-sourced identity provider on their behalf), to assert ‘user accountability’ before their users can gain access to a number of existing services, such as Digimap.

At present this may also apply to Jorum, run jointly by EDINA and Mimas.

A fuller description of user accountability is given in Section 6 of the ‘Rules of membership for the federation’ (<http://www.ukfederation.org.uk/content/Documents/FedDocs>).

Athens Gateways

The termination of the contract between JISC and Eduserv to maintain the gateway services has implications. The development of two gateways had been funded:

1. Shibboleth-to-Athens, to enable an institution using SAML-based identity management (such as Shibboleth) to gain access to Athens-protected resources.
2. Athens-to-Shibboleth, to enable an institution using Athens identity management to gain access to Shibboleth-protected resources.

The loss of general access to the gateways from 1 August means that Shibboleth-protected services will only be available to institutions who join the UK federation, using SAML-based identity management, or who adopt an outsourced identity provider (such as Eduserv, who have made a commitment to provide the Athens-to-Shibboleth gateway as part of their Open Athens product).

Marine Digimap launched

The fourth Digimap collection, Marine Digimap, was launched in January.

This new collection offers marine and coastal zone maps and data from SeaZone Solutions Ltd, providers of marine datasets which are based on the surveys of the UK Hydrographic Office and many other sources.

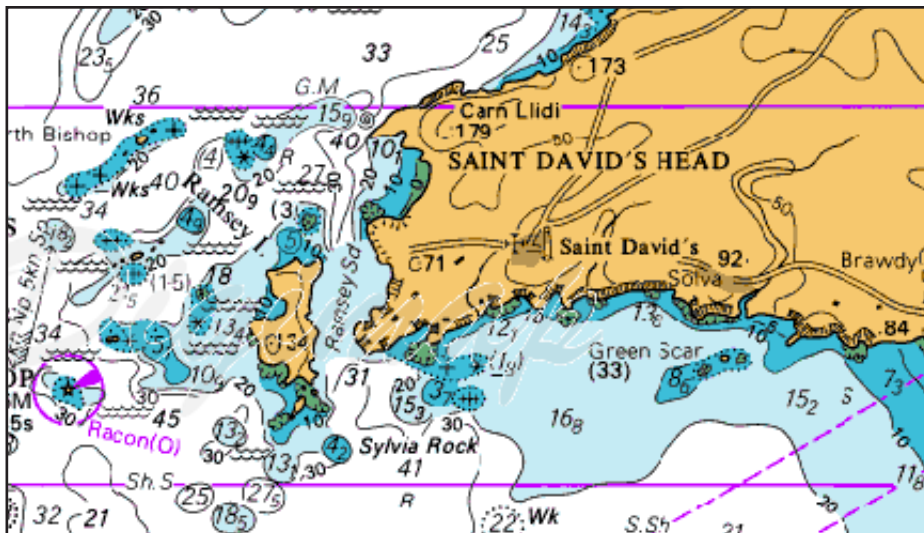
Similar in approach to the existing and well-known Digimap collections, Marine Digimap offers an online mapping facility and two data-download interfaces, providing SeaZone's Charted Raster and Hydrospatial products. The look and feel of Marine Digimap will be familiar to existing Digimap users, and just as easy to use.

The online mapping facility offers Charted Raster data, which are scanned and geo-referenced TIFF images of the Admiralty Chart series for the UK. These maps would be excellent for use as backdrops or general maps for a wide range of different areas of study. However, they must **never** be used for navigation.

Marine Digimap is available under a licence agreement that is separate from the other Digimap collections, and requires end-user registration.

Trials are available for those institutions considering a subscription. Please contact the EDINA Helpdesk for information. Subscription costs and details of how to subscribe to Marine Digimap can be found on the JISC Collections website below.

- More information about Marine Digimap at EDINA:
<http://edina.ac.uk/digimap/description/marine.html>
- Subscription information at JISC Collections:
http://www.jisc-collections.co.uk/catalogue/marine_digimap



St David's Head © Crown copyright/Seazone Solutions Ltd [2007]. All rights reserved. Not to be used for navigation. This image is reduced in size from an original supplied by Marine Digimap.

GeoCrossWalk crosses over to Digimap

GeoCrossWalk, EDINA's geospatial gazetteer that cross-references a range of geographical features, is now an application programming interface (API), available from within the EDINA Digimap service.

GeoCrossWalk is more than just a simple look-up facility. Every geographic feature stored in the gazetteer has detailed co-ordinate geometry stored with it, enabling complex spatial searching based on relationships between features, and providing more accurate results than simple look-ups.

GeoCrossWalk aims to assist other applications such as portals, virtual learning applications or research services to discover and exploit materials that have a spatial reference (eg place names and postcodes).

Read more about GeoCrossWalk from the web address below, or by logging in to Digimap.

- <http://www.geoxwalk.ac.uk>

Metadata made easy with Go-Geo!

Potential contributors to Go-Geo!, the portal for geospatial information and services, can now watch a new learning resource aimed at providing a simple introduction to the concept of metadata.

Located within the 'Resources for Geospatial Metadata' section, a Flash animation uses everyday examples to help the user understand what metadata is and how to use it. (HTML, PDF and PowerPoint versions are also available.)

- <http://www.gogeo.ac.uk/cgi-bin/mdlearning.cgi>

Digimap: OS MasterMap to replace Land-Line. Plus

Ordnance Survey has announced that the popular Land-Line.Plus® mapping dataset, which accounts for around 45% of the OS data files downloaded from Digimap, will be withdrawn on 30 September 2008. Digimap will cease to deliver Land-Line.Plus data in August 2008.

OS MasterMap® Topographic Layer is the replacement dataset; it has been offered by Digimap's Ordnance Survey Collection since September 2007. Two OS MasterMap layers are available: Topography and Integrated Transport Network (ITN).

EDINA is now encouraging Digimap users to take OS MasterMap Topography instead of Land-Line.Plus data wherever possible. The new data is richer and more versatile than Land-Line.Plus. With the right tools, it is also easier to use.

The right tools

OS MasterMap data is provided from Digimap in GML format, a standard, human-readable, format based on XML. The latest versions of ArcGIS and MapInfo are able to view this data directly; there are also new tools which make importing the data a straightforward process.

In addition to proprietary tools available, such as ESRI's Productivity Suite for ArcGIS and MapInfo's built-in data translator, there are two free data translators.

Dotted Eyes have released a special "Digimap Edition" of their commercial product which will translate OS MasterMap data from the EDINA Digimap service to formats recognised by GIS software. It is available free of charge to Digimap users from the Dotted Eyes website (see link below).

OSM2MIF is also freely available to Digimap users from the Bodleian Library Map Room website (see link below). This software will convert OS MasterMap GML data for use in MapInfo.

Instructions on how to download OS MasterMap data are included in the Digimap help pages. Instructions in the use of the data translators referred to here are also provided.

Further assistance in making the transition from Land-Line.Plus to OS MasterMap can be found on the EDINA website.

- OS MasterMap at EDINA:
<http://edina.ac.uk/mastermap>
- Dotted Eyes software:
http://www.dottedeyes.co.uk/spatial_data_loading/interpose/digimap.php
- Bodleian Library Map Room:
<http://www.bodleian.ox.ac.uk/guides/maps>

Land, Life & Leisure enhancements and costs for 08/09

An enhanced service interface has recently been introduced for Land, Life & Leisure, the rural affairs index, which is updated weekly.

The changes are mainly on the search page.

Directly above the search button (see picture) we've placed a new icon: "Setting an AutoAlert", a weekly email with matching records based on preset searches.

We've reordered the "In the news" box to include a link to the Editor's blog on the Land, Life & Leisure "explore" website, and a link to weekly updates.

A new row of links at the foot of the page have been added to highlight additional supporting pages.

New subscription rates have now been published, and 30-day trials are available for new institutions interested in assessing the service.

• <http://edina.ac.uk/landlifeleisure>

Screenshot of enhanced Land, Life & Leisure standard search page, showing AutoAlert icon, revamped news area and new links.

News in Brief . . .

UKBORDERS engagement with users

In this issue of Newslines we are including a flyer for UKBORDERS, the census boundary data service, and the longest-running EDINA service.

EDINA has recently run several in-depth courses jointly with Mimas to promote UKBORDERS to researchers; but registration to use the service is open to anyone at UK FE/HE institutions.

There is plenty of supporting material on the UKBORDERS website explaining the service. We also have a stock of posters and flyers available for institutions to advertise UKBORDERS.

Please contact us if you would like a quantity sent to your college or university.

• <http://edina.ac.uk/ukborders>

SALSER content updated

SALSER, the Scottish Academic Libraries Serials catalogue, has been updated.

The model for this service is a contributory one, with libraries across Scotland submitting records of serials to a centrally-administered system.

Following recent contact, several libraries have sent updates. We are liaising with others and hope to add further updates in the coming months.

The combined catalogue is open access and we invite you to search and browse the thousands of serials details.

• <http://edina.ac.uk/salsler/>

CAB Abstracts – going weekly and on into 2009

Users of EDINA CAB Abstracts, the bibliographic database compiled by CAB International, will soon benefit from weekly updates. This change is part of a wider upgrade which has also improved features such as publication linking and thesaurus performance.

EDINA has also now finalised a 2008/2009 agreement with CAB International, and prices for the new service period commencing 1 August are on the EDINA website.

Existing subscribers have access to the upgraded service; others are welcome to view it by contacting us to request a 30-day institutional trial.

• <http://edina.ac.uk/cab>

Low Cost OpenURL Resolver project

EDINA has been commissioned by JISC to review the feasibility of and demand for a low-cost OpenURL resolver service in UK higher education, to provide streamlined access to subscribed information products, including journals.

The project team will initially scope the service's feasibility and potential uptake; if these are positive, the team will then design an architecture and explore potential business models.

• http://edina.ac.uk/projects/LowCostOpenURL_summary.html

HILT project helps cross-searching

EDINA is working with the Centre for Digital Library Research (CDLR) on the JISC-funded High Level Thesaurus (HILT) project, currently in phase four.

HILT seeks to develop a service that will use thesauri to help cross-searching between different JISC-funded services that may use disparate terminology to describe their services.

CDLR are leading and managing the project, with EDINA providing programming support for development of the Search/Retrieve Web Service (SRW) client, advice on performance and interface issues, hosting the SRW server and testing developments using a Go-Geo! client.

HILT project staff want to make contact with staff in information services or in projects interested in helping it test and refine its developing terminology services. See the web address below for more details.

• <http://hilt.cdrl.strath.ac.uk/hilt4/index.html>

Coastal navigation with COMPASS

The JISC-funded Coastal Marine Perception Application for Scientific Scholarship (COMPASS) project recently held a two-day workshop in Edinburgh, where coastal marine experts came together with ontology experts to develop relevant domain ontologies.

Information on the project, including the ontology developments, can be found on the COMPASS project web site:

• <http://compass.edina.ac.uk>

Yet more on Access Management

... continued from Page 1

Our front page story provides an overview on what can be said now on policy, plans and progress for access to EDINA services. However, there is so much happening in this area, much of it dynamic or dependent upon work being done by others, that we have decided to provide an online method for you to find out more and keep up to date. Please check both the EDINA and federation websites for updates and look out for announcements from JISC.

For example, at the time of writing, the Athens-to-Shibboleth gateway is not able to assert user accountability, and thus at present institutions cannot access Digimap or Jorum by that route. This should change as Eduserv have stated their intention to enable the Athens-to-Shibboleth gateway to assert user accountability at some time during May 2008.

Included on our website are some extra stories, such as:

New way to access Digimap

The UK Federation has arrived in the world of Digimap. But what will it mean to users and support staff?

Review of OpenID

The use of OpenID has grown hugely in the past two years, but given the self-registration aspect of the system, does it have any application in academia?

SDSS: Expert Group in Identity Management

The EDINA SDSS team has been designated by JISC as an Expert Group in Identity Management.

Read the full stories on the Newslines website:

- <http://edina.ac.uk/newslines.html#access>

Forthcoming Events

Conferences and Exhibitions

GISRUK 2008

2-4 April at Manchester Metropolitan University

UKSG Annual Conference 2008

7-9 April at Riviera International Conference Centre, Torquay

JISC Conference 2008

15 April at the International Convention Centre, Birmingham

HE Academy Annual Conference

1-3 July at the Harrogate International Centre

Training

Digimap Training Course

1-3 April at Liverpool Hope University

OS MasterMap for Users Workshop

4 April at Liverpool Hope University

EDINA Multimedia Services Training Course

24 April at the JISC Regional Support Centre Scotland North & East, Edinburgh's Telford College

Digimap Training Course

10-12 June at the University of Sussex

See the latest events and training information at:

- <http://edina.ac.uk/events/>

New look and features for EDINA website

EDINA launched a new look to its website in February 2008.

We hope you like the overall design, and particularly the area 'For Library and Support Staff'. We would appreciate your feedback: does the new website help you in your work, and do your end-users like it?

Another link from the home page, 'Ways to Contribute Online', invites feedback and discussion, as well as signalling that we would like users to 'put' as well as 'get', ie to contribute materials for sharing, through depositing in online repositories such as the Depot and Jorum.

Elsewhere on the site, the service-specific areas now more closely match individual service interfaces, within an overall EDINA look and feel.

Please explore, discover some new areas and let us know what you need: there is a 'Feedback' link at the top of every page!

- <http://edina.ac.uk>

The screenshot shows the EDINA website homepage with a navigation bar at the top containing links for Help & Support, About, Feedback, Contact, Site Map, and Search Site. Below the navigation bar is a header with the EDINA logo and the tagline "providing resources for staff and students in higher and further education in the UK and beyond". The main content area is divided into several sections: Services, Projects, Reading & Reference, Maps & Data, Multimedia & Education, and News, Events & Training. The Reading & Reference section includes links to Article References, CAB Abstracts, Index to The Times, Inspec, Land, Life & Leisure, Journal Catalogues, SUNCAT (UK), SALSER (Scottish), and E-books. The Maps & Data section includes links to Geo-data Portal, Go-Geol, Maps & Datasets, Digimap - Ordnance Survey, Geology Digimap, Historic Digimap, Marine Digimap, and UKBORDERS. The Multimedia & Education section includes links to Film, Images & Sound, Film & Sound Online, Education Image Gallery, Learning Materials, Jorum User, Deposit Learning Materials, and Jorum Contributor. The News, Events & Training section includes links to EDINA - redesigned website, CLOCKSS Works, SUNCAT sets up Blog, and Digimap goes to sea. There are also buttons for "Ways to contribute online", "Our projects and middleware", and "For library and support staff". The footer contains the text "EDINA is a JISC National Data Centre based at the University of Edinburgh | Accessibility | Acknowledgements" and the JISC logo.

The new EDINA website includes a special area for library and support staff, an area for contributing online, and a Feedback button on each page...